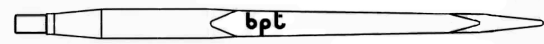


Bale Spears - Conus 1

Special Order Sizes Available Upon Request

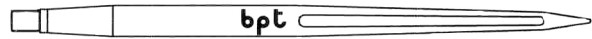
Tapered Bale Spears w/ Nut



Part #	Overall	Usable	Diameter	Color	Brand	Max Load
81328	24"	19"	36mm	Black	bpt®	1,870lbs.

Bushings sold Separate

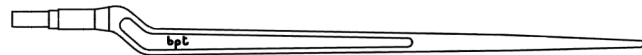
Ribbed Bale Spears w/ Nut



Part #	Overall	Usable	Diameter	Color	Brand	Max Load
70187	32"	27"	38mm	Black	bpt®	1,870lbs
49664	39"	34"	36mm	Black	bpt®	1,870lbs.
49665	43"	38"	36mm	Black	bpt®	1,870lbs.

Bushings sold Separate

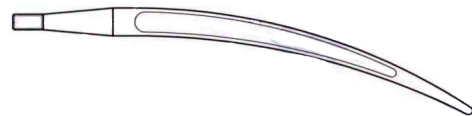
Cranked Tine



Part #	Overall	Usable	Diameter	Color	Brand	Max Load
79258	36"	26"	36mm	Red	bpt®	1,870lbs

Bushings sold Separate

Curved Tine w/ locking piston

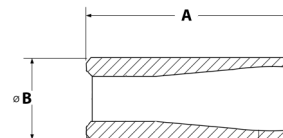


Part #	Overall	Usable	Diameter	Color	Brand	Max Load
86925	24"	18"	36mm	Black	bpt®	1,870lbs

Bushings sold Separate

Bushings/Sleeves

Part #	Brand	A	B	Fits Bale Spear #
81329	bpt®	110mm	45mm	81328 & 79528
58928	Grizzly®	110mm	45mm	70187
49666	bpt®	145mm	47mm	49664 & 49665
102192	Grizzly®	145mm	47mm	49664 & 49665
86926	bpt®	110mm	45mm	86925



Replacement Nuts



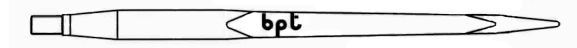
Part #	Fits Bale Spear #	Specs
81330	81328 and 79528	M20x1.5
52028	70187, 49664, 49665	M22x1.5
84914	79258	M24x1.5

Bale Spears - Conus 2



Special Order Sizes Available Upon Request

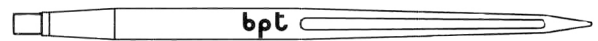
Tapered Bale Spears w/ Nut



Part #	Overall	Usable	Diameter	Color	Brand	Max Load
61413	32"	27"	45mm	Black	bpt®	3,500lbs
61414	39"	34"	45mm	Black	bpt®	3,500lbs
83120	43"	38"	45mm	Black	bpt®	3,500lbs
49601	49"	44"	45mm	Black	Grizzly®	3,200lbs
44119	49"	44"	45mm	Black	bpt®	3,500lbs
77880	49"	44"	50mm	Black	bpt®	4,800lbs

Bushings sold Separate

Ribbed Bale Spears w/ Nut



Part #	Overall	Usable	Diameter	Color	Brand	Max Load
53724	43"	38"	42mm	Black	bpt®	3,234lbs
82554	47"	42"	42mm	Black	bpt®	3,234lbs

Bushings sold Separate

"Bolt On" Bale Spears

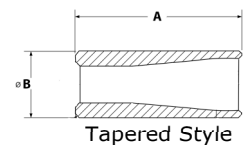
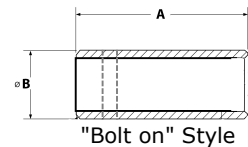


Part #	Overall	Usable	Diameter	Bolt Diameter	Color	Brand	Max Load
69122	32"	27"	42mm	14mm pin hole	Black	bpt®	3,234lbs
49667	47"	42"	42mm	12mm pin hole	Black	bpt®	3,234lbs

Bushings sold Separate

Bushings/Sleeves

Part #	Brand	A	B	Pin Hole	Fits Bale Spear #
49668	bpt®	150mm	60mm	13mm	69122 & 49667
86407	Grizzly®	150mm	60mm	13mm	69122 & 49667
53725	bpt®	145mm	57mm	Tapered	53724 & 82554
44132	bpt®	145mm	60mm	Tapered	All Agmate 45mm Spears
84130	Grizzly®	145mm	60mm	Tapered	All Agmate 45mm Spears
85859	Grizzly®	111mm	50.8mm	Tapered	All Agmate 45mm Spears
77881	bpt®	170mm	70mm	Tapered	77880



Replacement Nuts

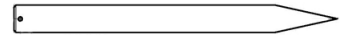


Part #	Fits Bale Spear #	Specs
52029	All 42mm-50mm bpt® Spears	M28x1.5
77853	49601	M30x2

Bale Spears

Grizzly® Stabilizer Spears

Special Order Sizes Available Upon Request



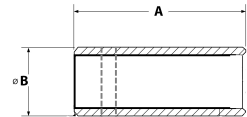
Part #	Overall	Diameter	Bolt Diameter	Brand	Material
63612	18.25"	1.25"	1/4" pin hole	Grizzly®	C1045 Cold Rolled
63613	20"	1.50"	1/4" pin hole	Grizzly®	C1045 Cold Rolled

Bushings not available for the above stabilizer spears



Part #	Overall	Diameter	Bolt Diameter	Brand	Material
85857	17"	1.25"	5/16" pin hole	Grizzly®	C1045 C.R.- Zinc Plated

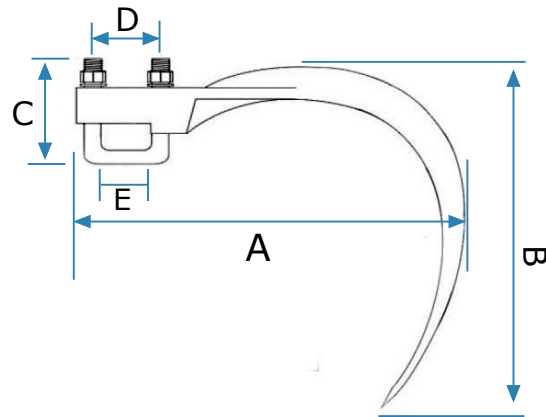
Bushings sold Separate



Bushings/Sleeves

Part #	Brand	A	B	Pin Hole	Fits Bale Spear #
85858	Grizzly®	73mm	44mm	5/16"	85857

Agmate® Hay Grapple Hook



Part #	Description	"A"	"B"	"C"	"D"	"E"
68279	Small Hay Hook with U-Bolt Kit	7"	9"	2-1/2"	1-5/8"	1-1/4"
89071	Small Hay Hook without U-bolt Kit	7"	9"	2-1/2"	1-5/8"	1-1/4"
101468	Large Hay Hook with U-bolt Kit	11"	12-1/4"	3"	2"	1-1/2"



Part #	Description
72794	Replacement U-Bolt Kit for Small Hay Hook (U-Bolt, 2 Lock washers, 2 nuts)